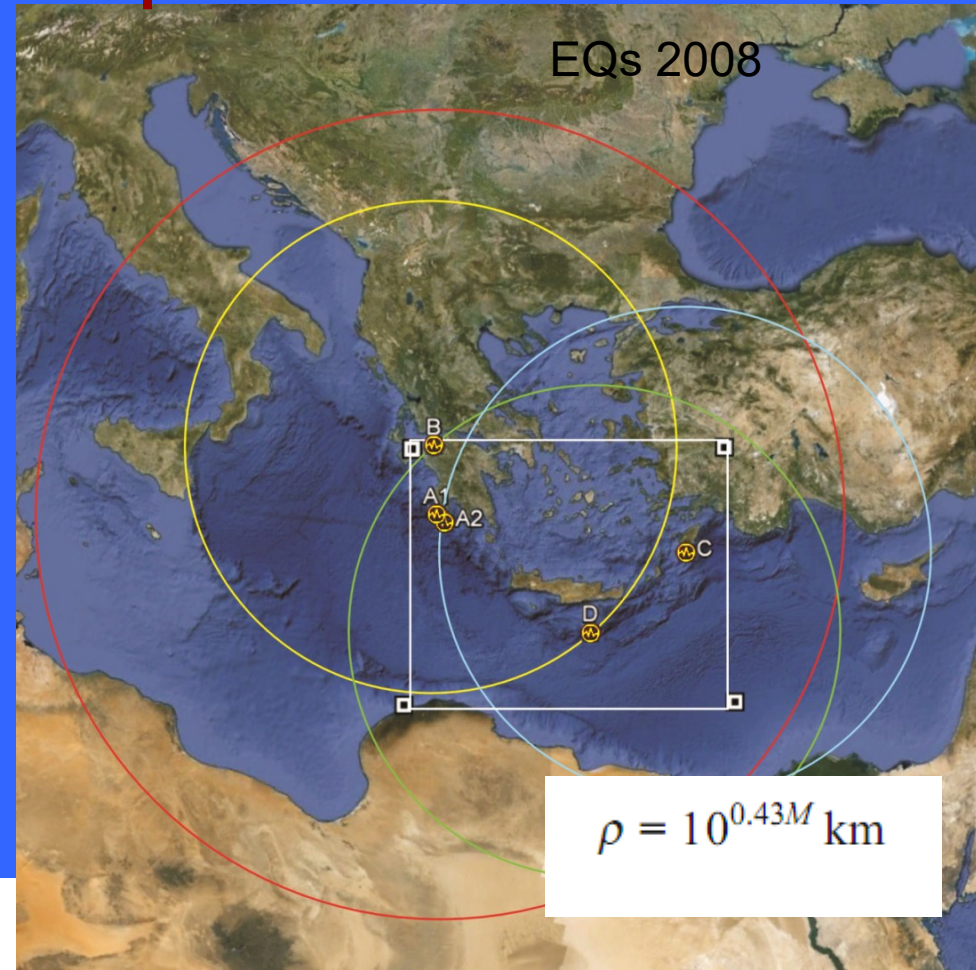
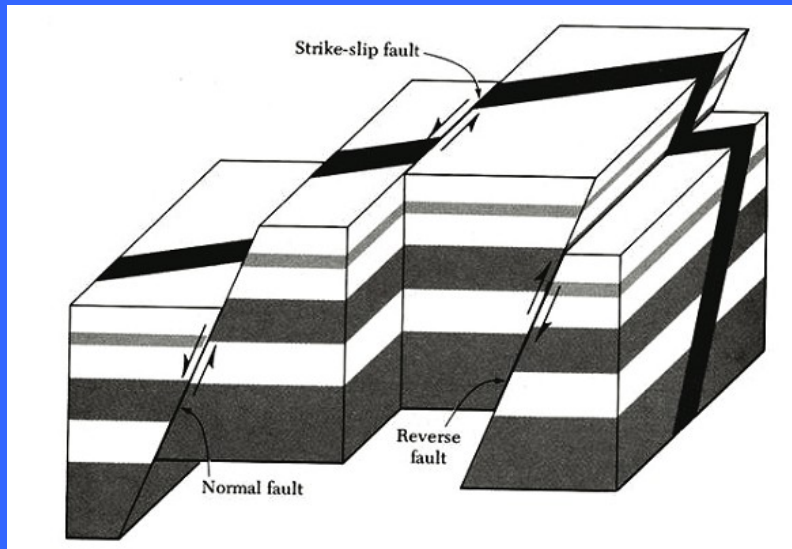


Time interval
2008-2010 (2012)

EQ		Date	M
A1	●	2008/02/14	6.9
A2	●	2008/02/14	6.5
B	●	2008/06/08	6.4
C	●	2008/07/15	6.4
D	●	2009/07/01	6.4

Η σεισμική δραστηριότητα ήταν κυρίως γνωστό ως ένα μηχανικό φαινόμενο

ΤΕΚΤΟΝΙΚΗ ΠΛΑΚΑ



Earthquake Preparation Zone

The conception of the earthquake preparation zone was developed by different authors (Dobrovolsky et al. 1979; Keilis-Borok and Kossobokov 1990; Bowman et al. 1998). In general words, this is an area, where the local deformations connected with the source of the future earthquake are observed.

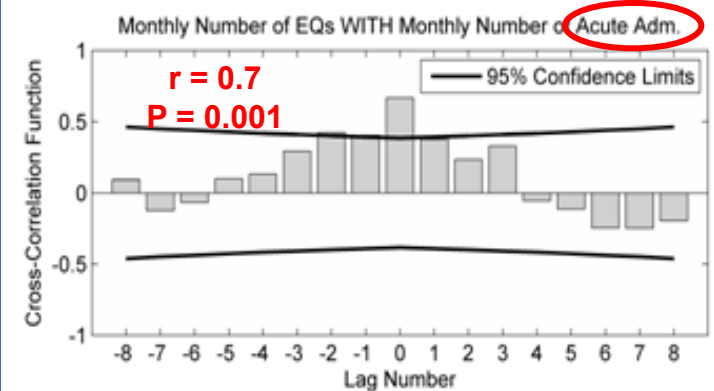
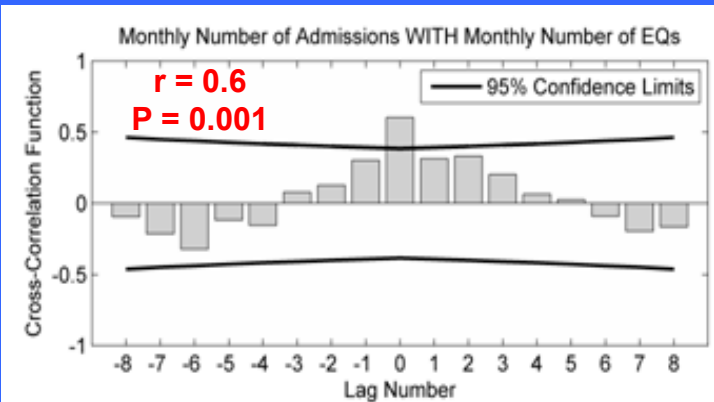
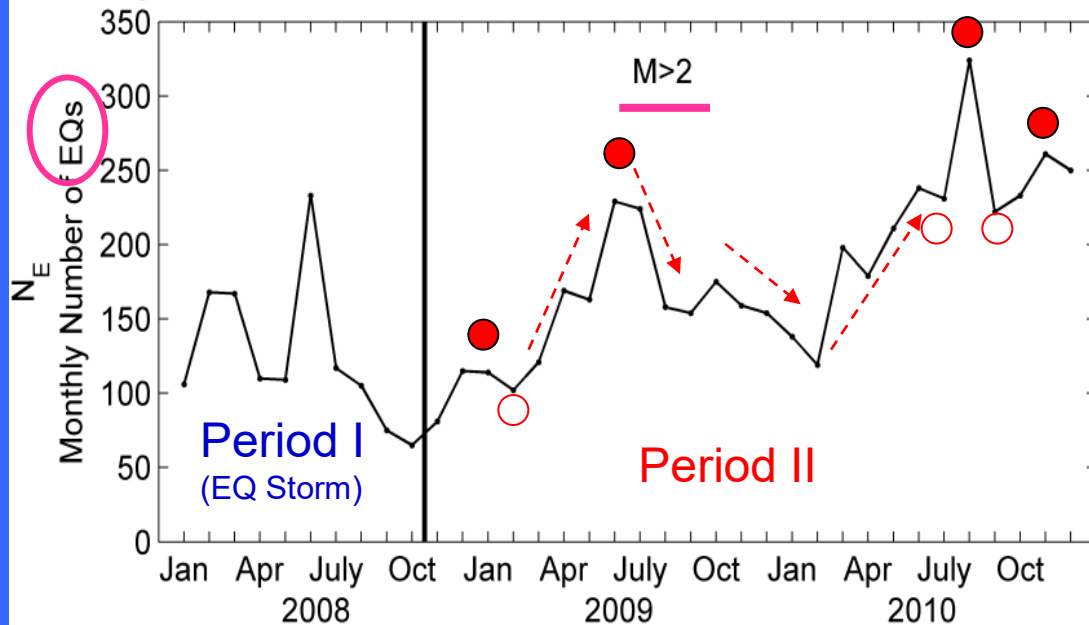
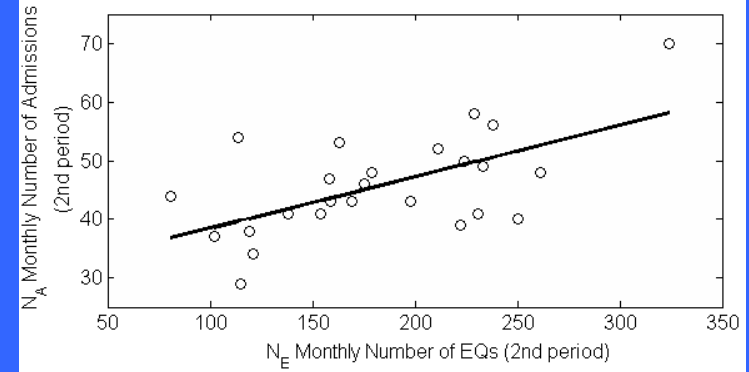
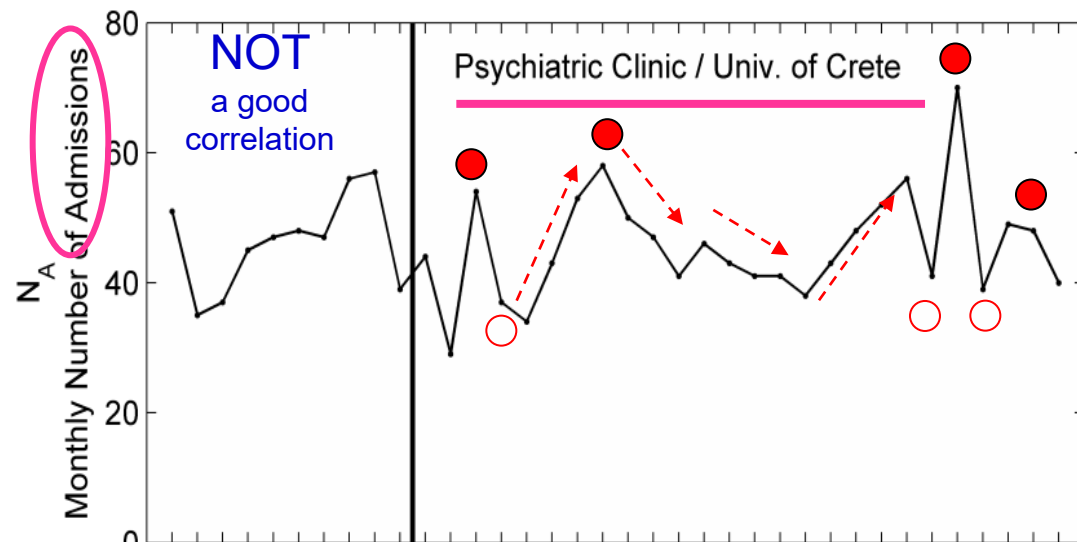
B.

Διαφορετική επίδραση των μεγάλων & μικρών σεισμών στην ψυχική υγεία

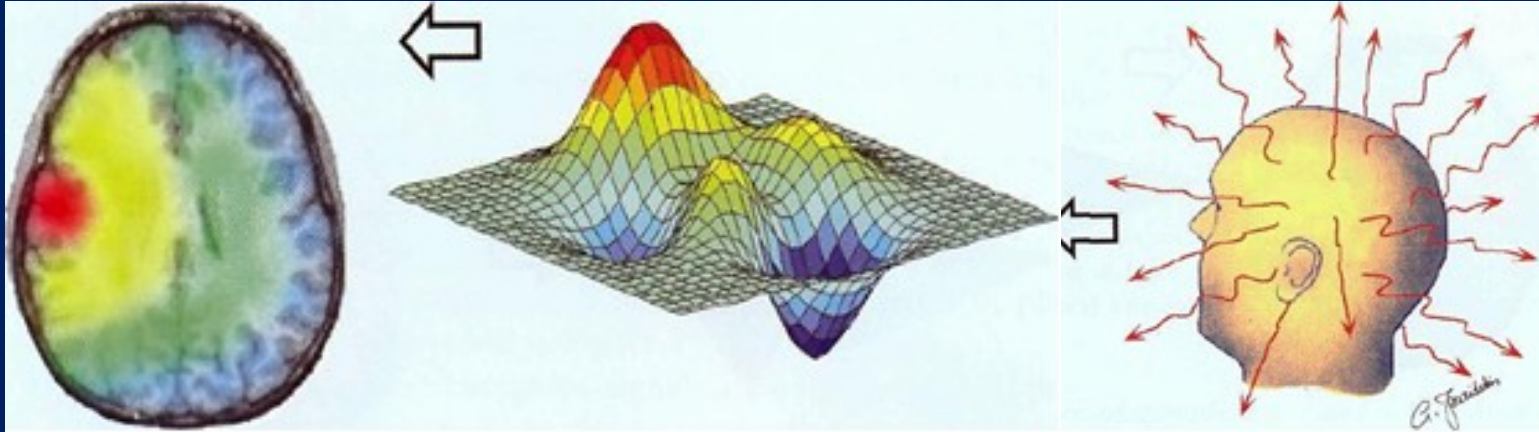


$$P - I \neq P - II$$

Strong correlation between the number of admissions N_A and the number of EQs N_E



The neural network radiates and receives signals in the ELF / ULF (<100 Hz)



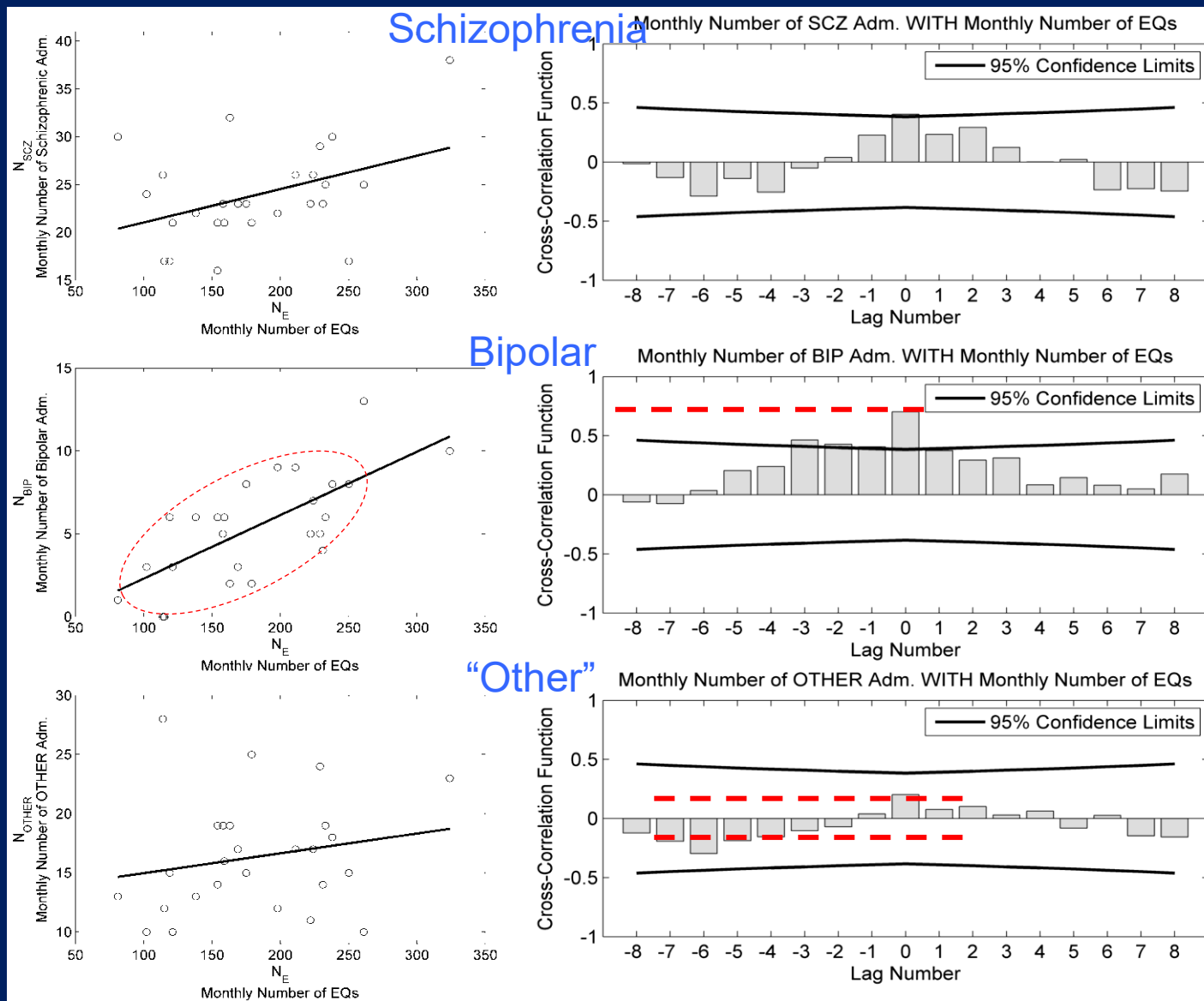
0.1-5 Hz / affect the sympathetic nerves

- **0.1-10 Hz / muscle**
- **10-150 Hz / parasympathetic nerves**
- **10-15 Hz / motor nerves**
- **90-110 Hz / sensory nerves,**

The number of EQs N_E is related in different ways for various types of Psychotic disorders (schizophrenia, bipolar, "other")

Bipolar disorders shows a strong ($r=0.75$) correlation with N_E at $P > 95\%$

"Other" disorders do **NOT** show any significant correlation with N_E



UHF	3 GHz
VHF	300 MHz
HF	30 MHz
MF	3 MHz
LF	300 kHz
VLF	30 kHz
VF	3 kHz
ELF	300 Hz
ULF	30 Hz
	0 Hz

3

GOES and Terra satellites sense infrared light from positive charges recombining with electrons in the air.



DEMETER, COSMOS 1809, and QuakeSat satellites sense ELF magnetic disturbances.

SIGNS OF QUAKES TO COME: Rocks cracking before earthquakes cause positive charge to flow up toward the surface. The flow of charge leads to electromagnetic disturbances that can be detected at the surface and even from space.

The ionosphere drops prior to an earthquake.

Air-conductivity sensor detects charges that can cause lights in the sky.

Lights

Charges accumulate on rock outcroppings.

2

Radar measures the height of the ionosphere.

Magnetometers detect ULF and ELF changes in the magnetic field.

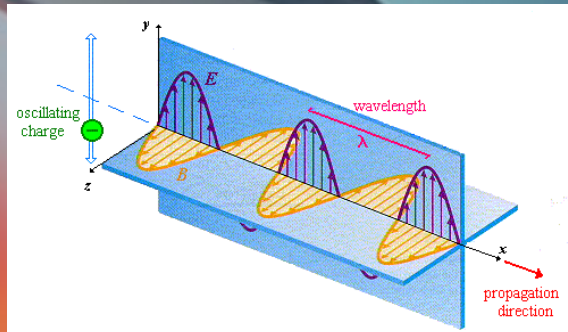
GPS satellite

Electrons in the ionosphere alter the relative phase of GPS signals.

VLF, HF, and UHF radio signals become stronger as the ionosphere drops.

1

Stress on rock preceding earthquake causes flow of charge.

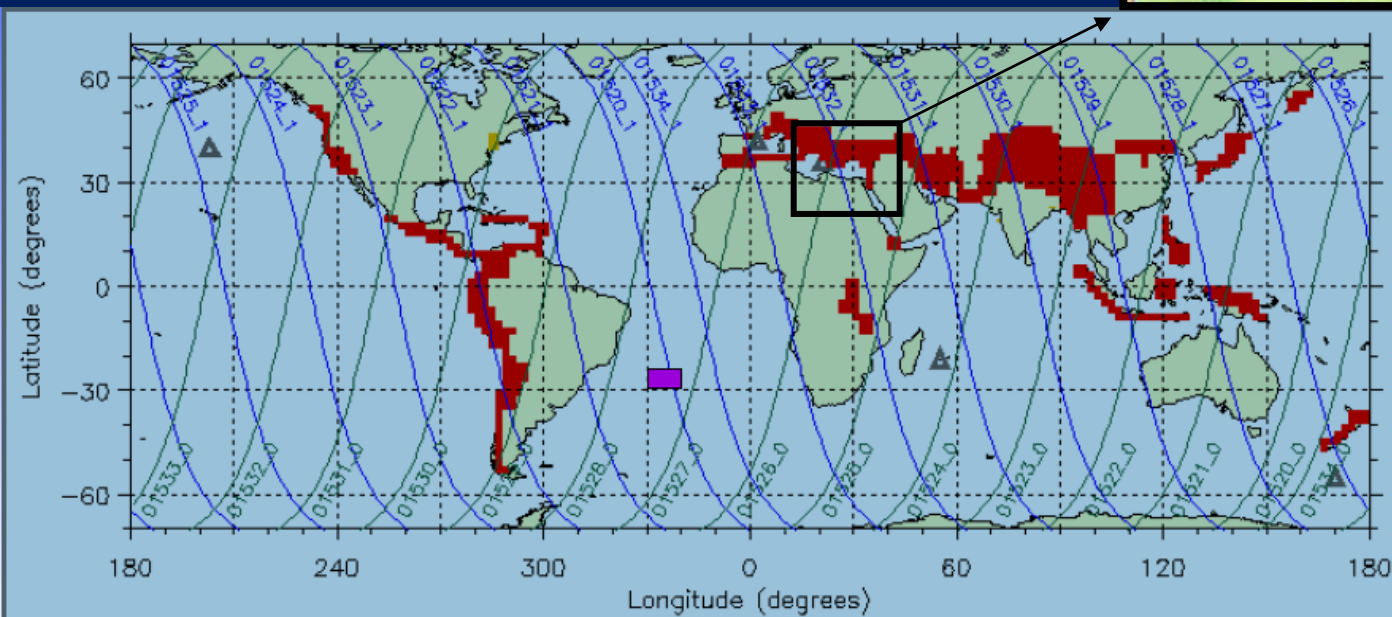


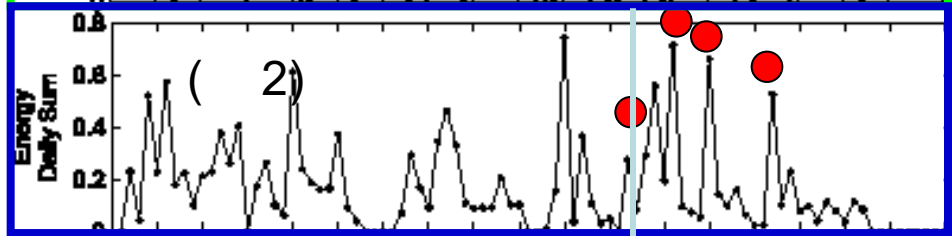
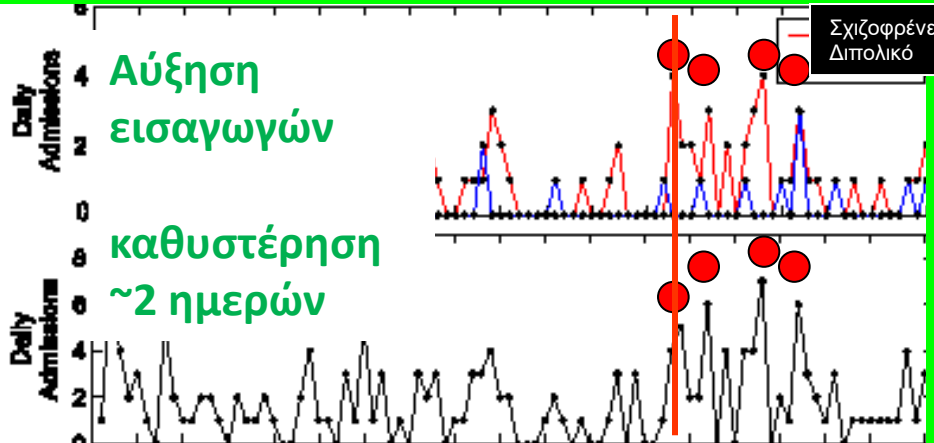


DEMETER s/c

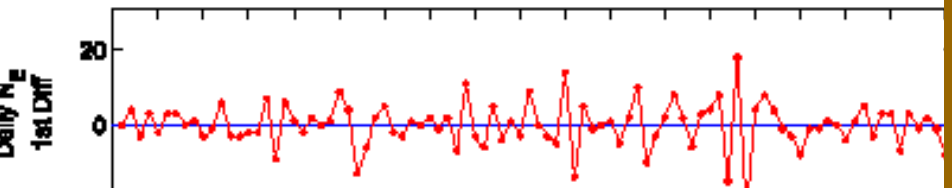
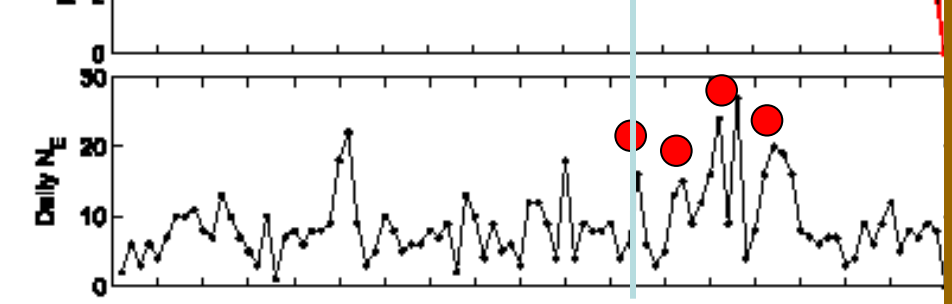
Orbit altitude: 710 km

14 orbits per day / Period: ~90 min

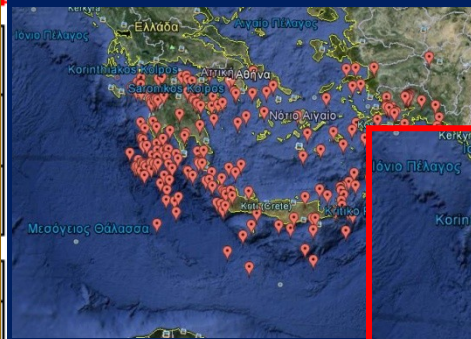
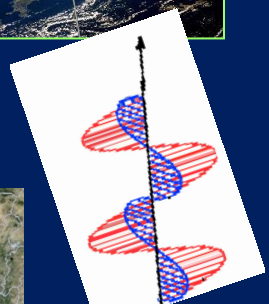




Ταυτόχρονη αύξηση ULF ακτινοβολίας



Αύξηση σεισμών

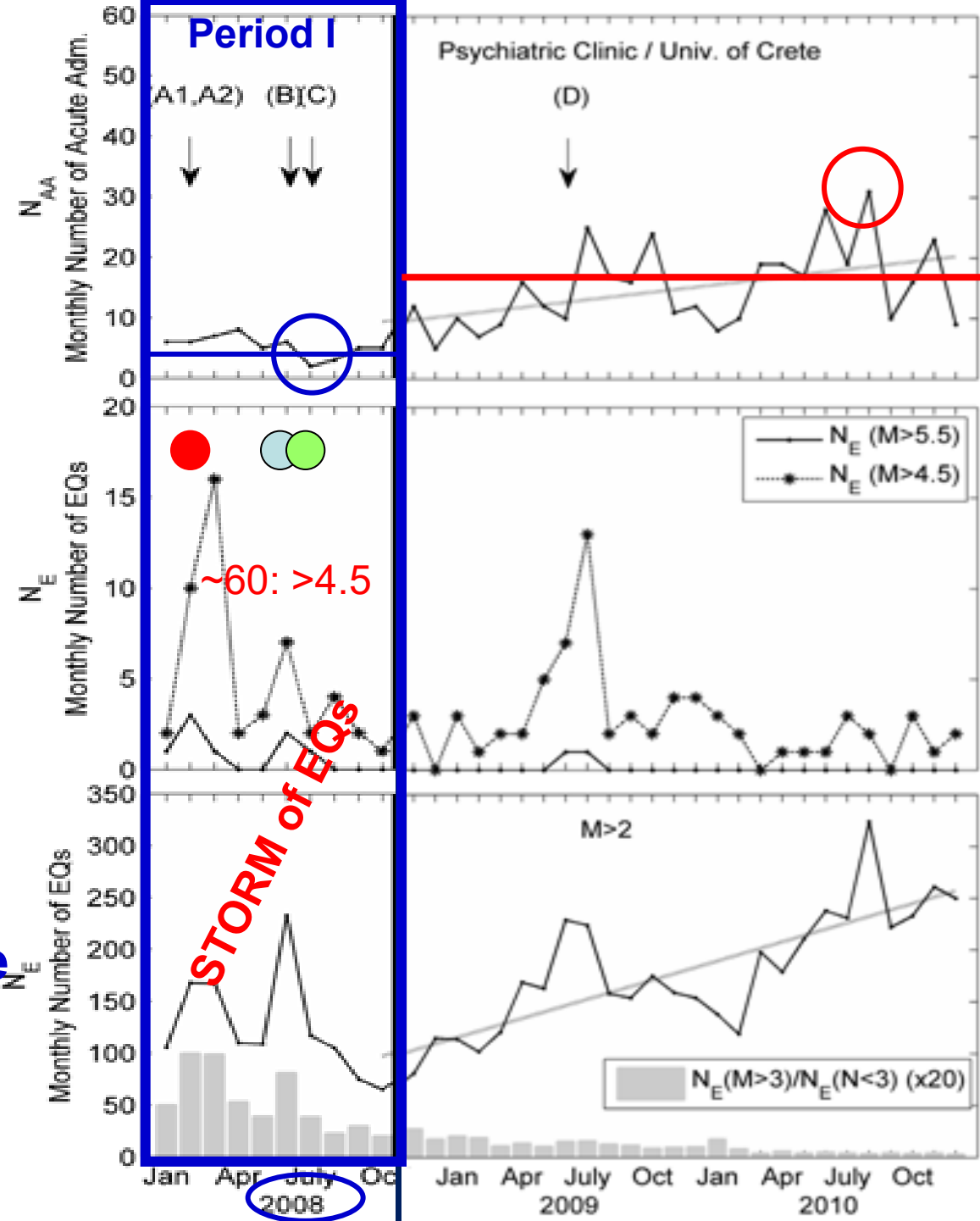


Acute admissions

EQ	Date	M
A1	2008/02/14	6.9
A2	2008/02/14	6.5
B	2008/06/08	6.4
C	2008/07/15	6.4
D	2009/07/01	6.4



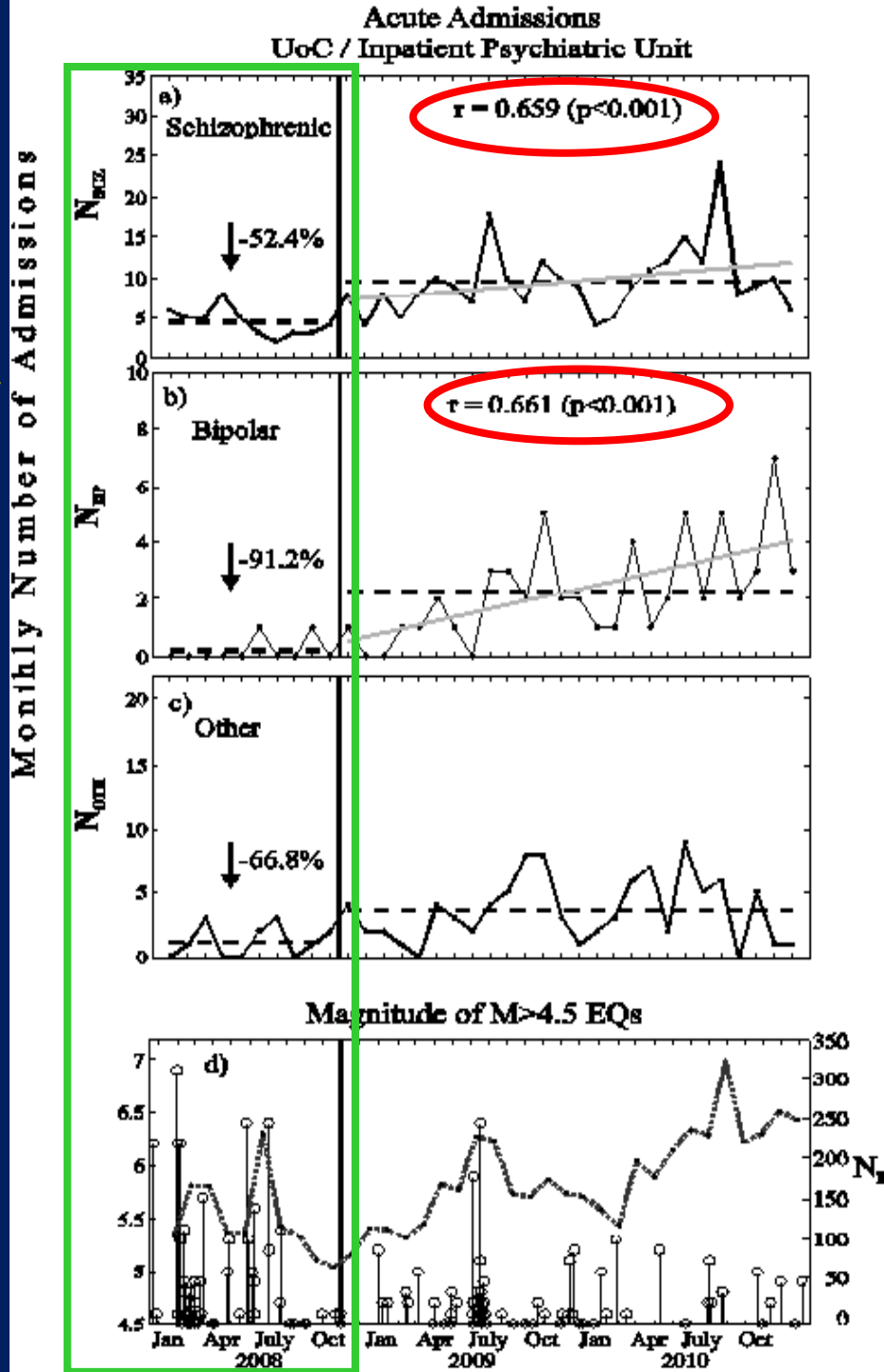
Very low admission Rate during P-I !!!

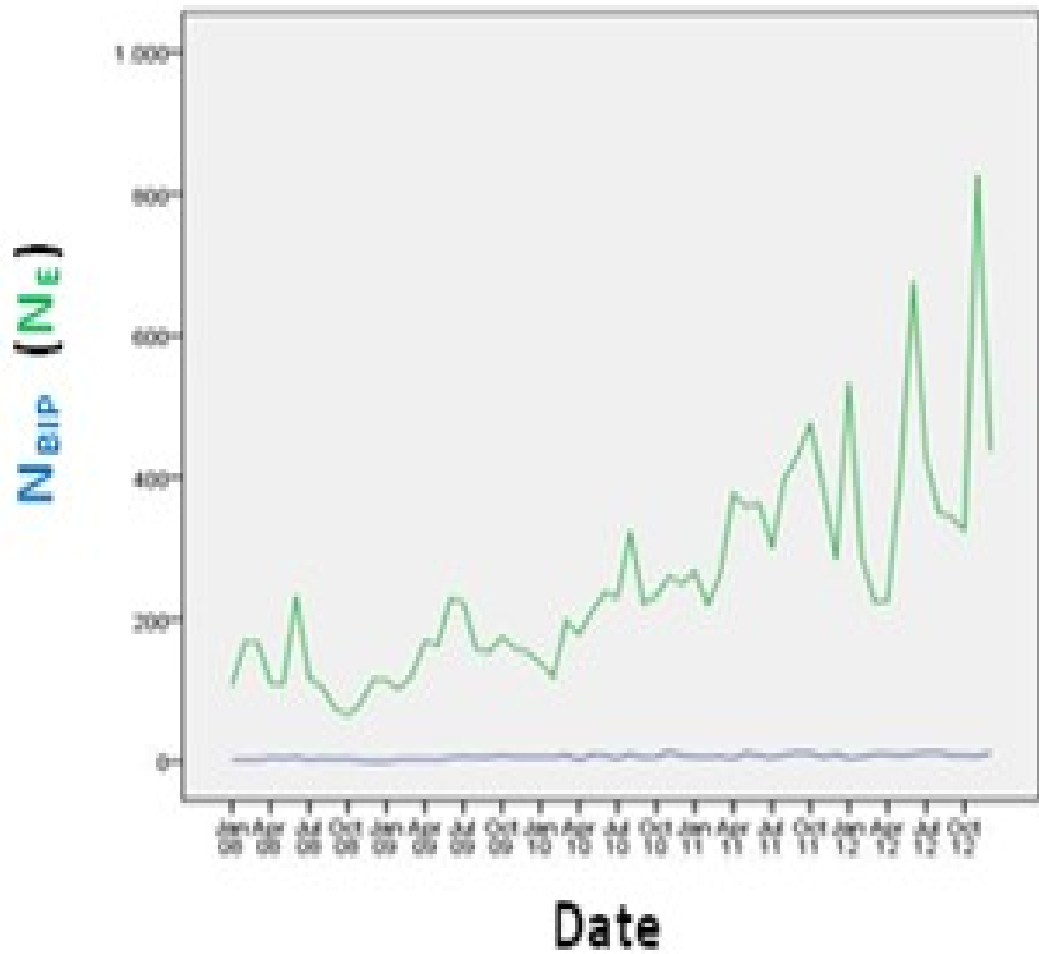


ΟΞΕΑ
Περίοδος I
(μεγάλοι σεισμοί)

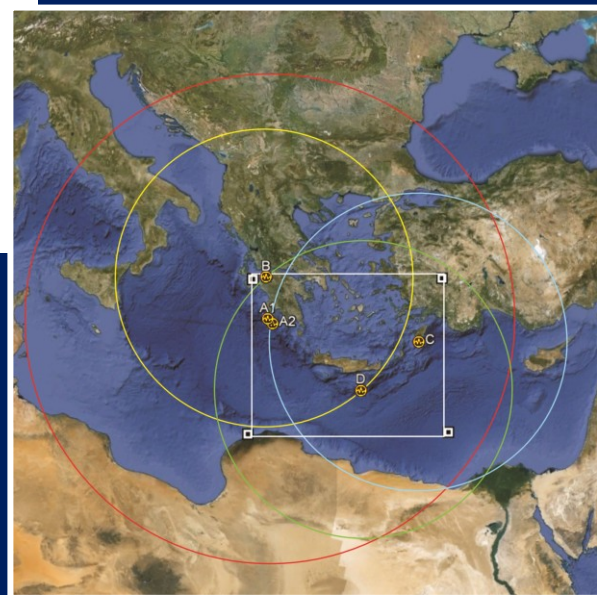
✓ **Λιγότερες Εισαγωγές**

✓ **Μεγαλύτερη μείωση:
Διπολική Διαταραχή
(~90%)**

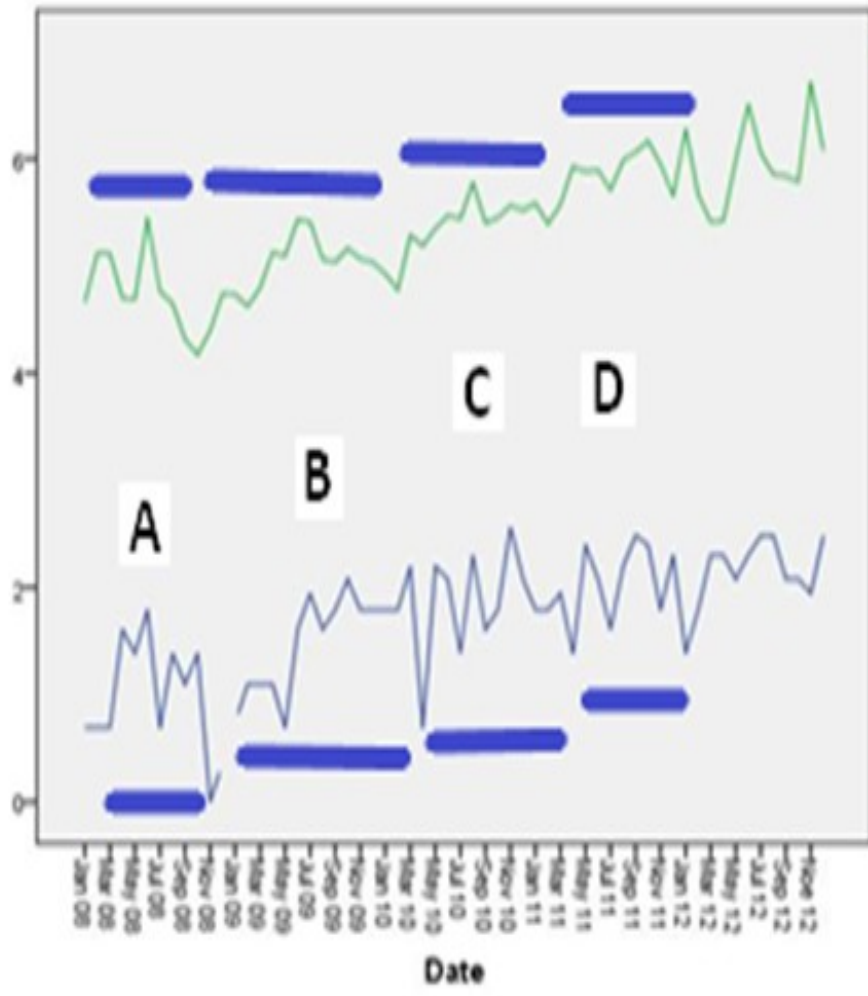




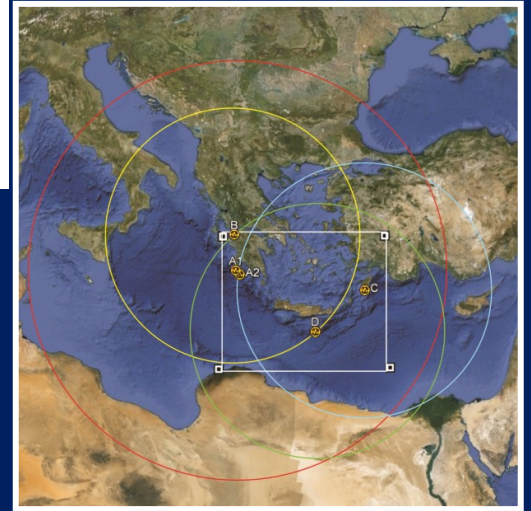
(b)

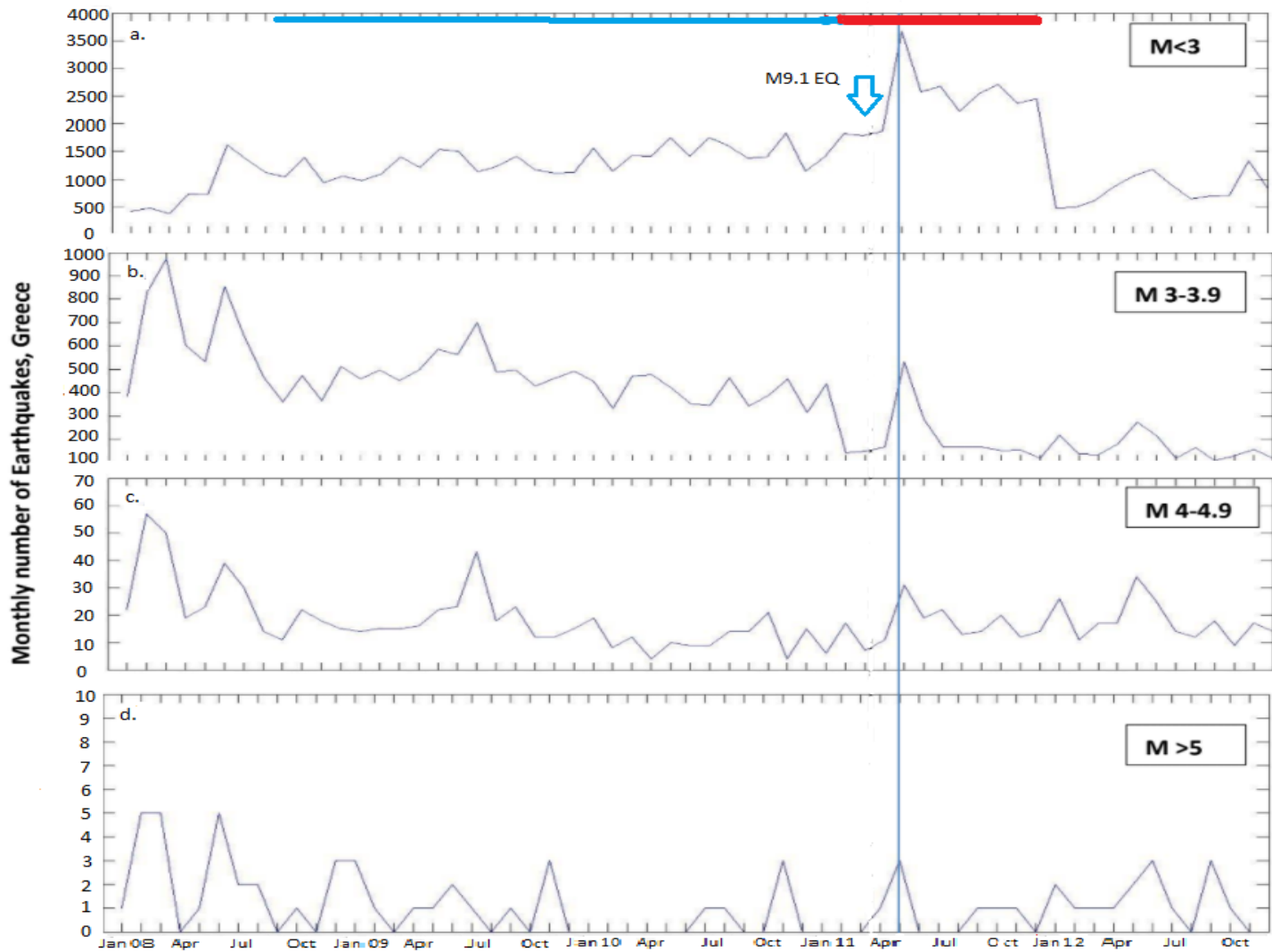


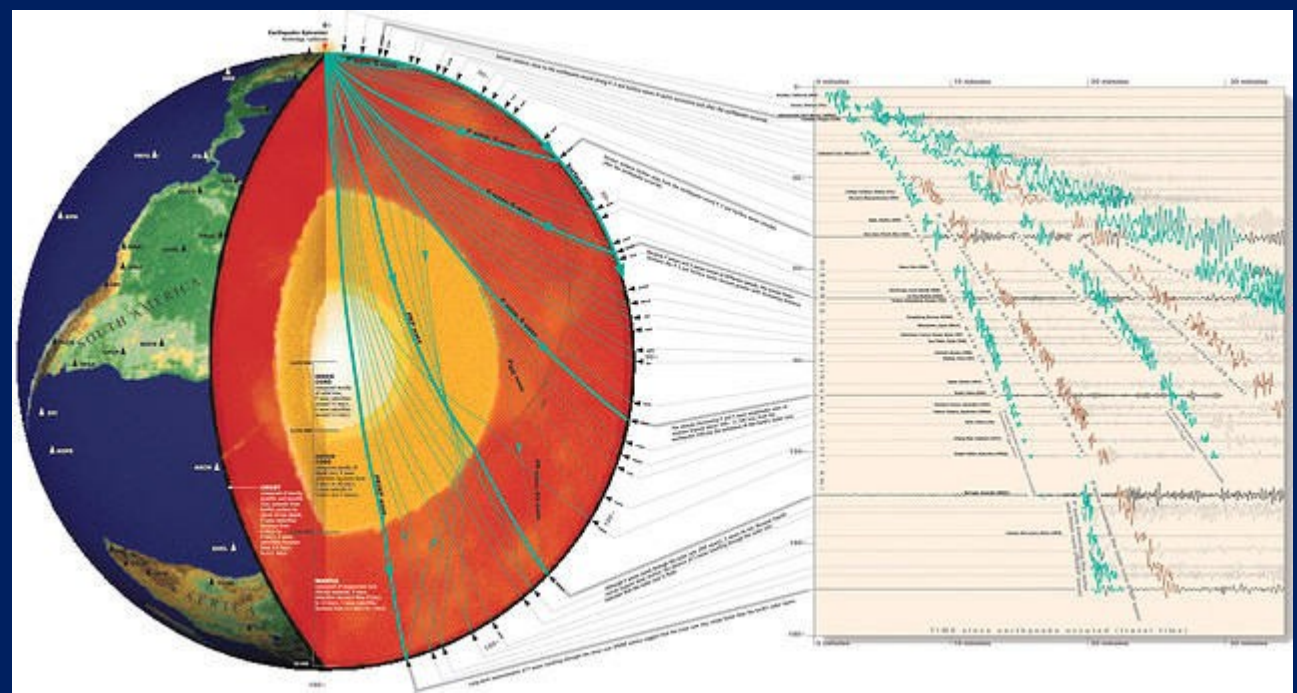
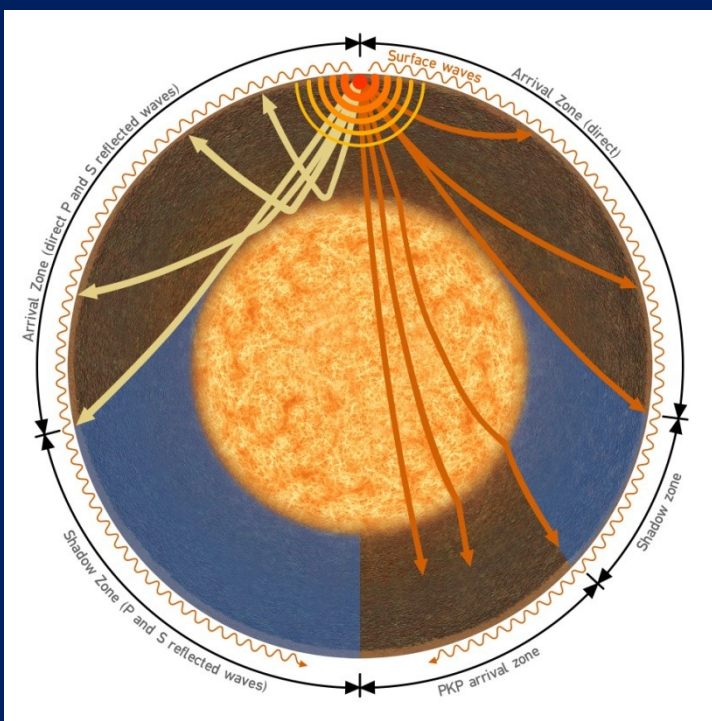
In N_{BIP} (N_E)



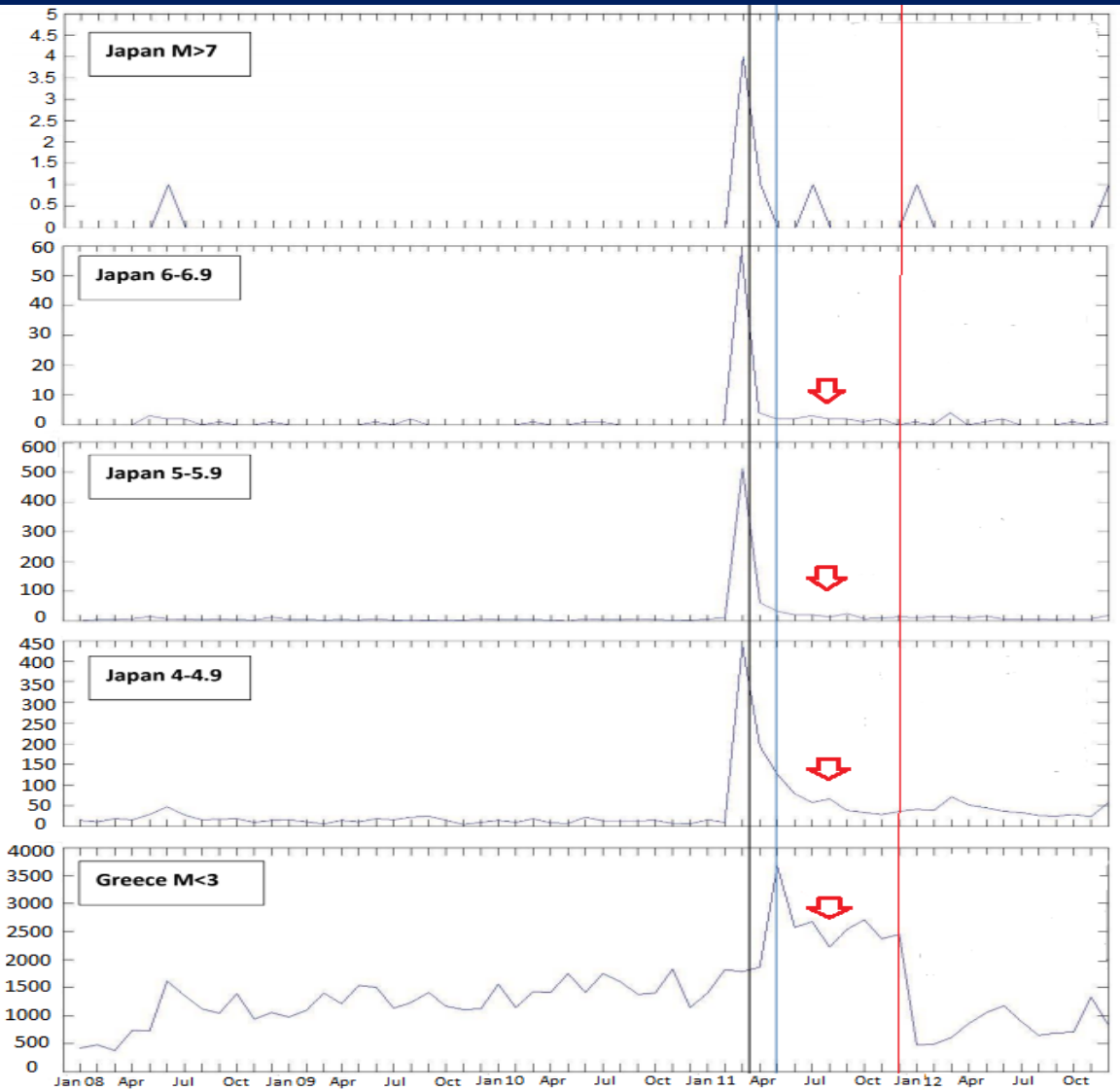
(a)





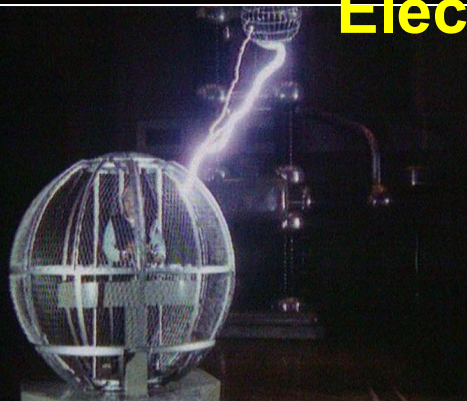


Monthly Number of Earthquakes

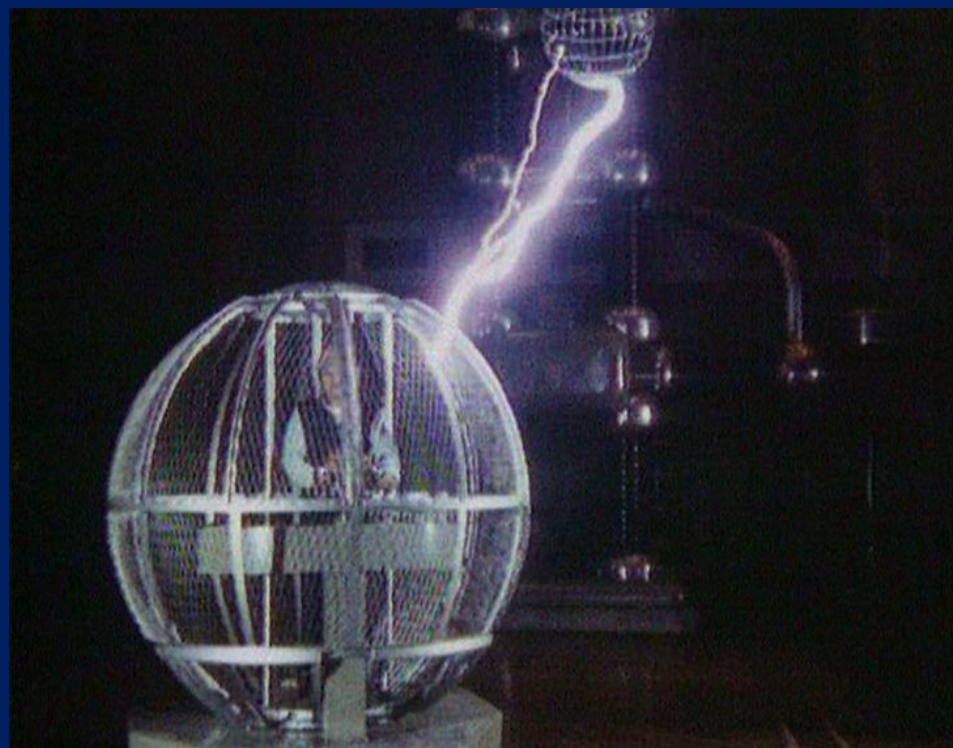


Electromagnetic Protection for psychotic patients

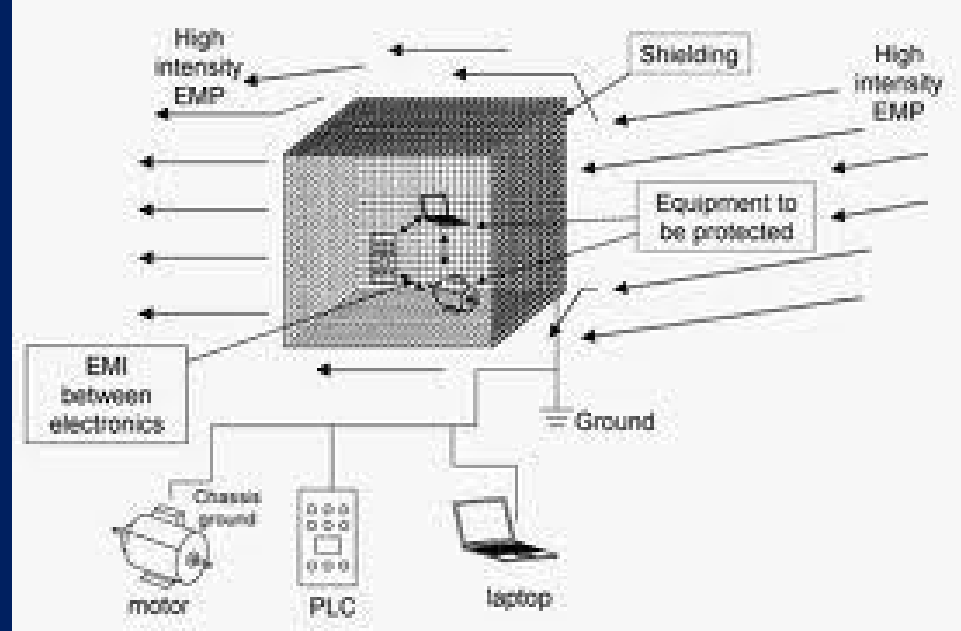
The good news-1



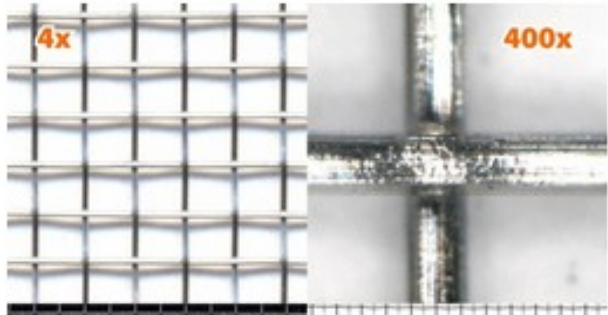
Ηλεκτρομαγνητική προστασία



ΗΜ ΠΡΟΣΤΑΣΙΑ (Κλωβός Faraday)



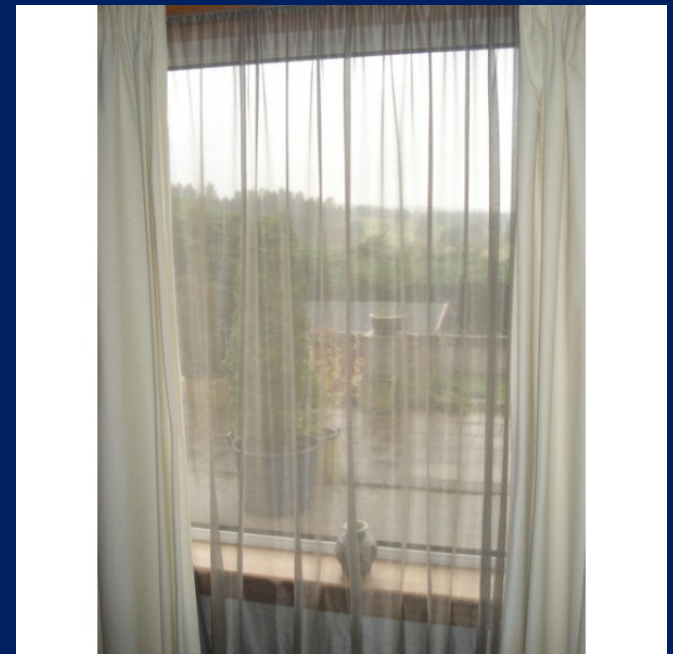
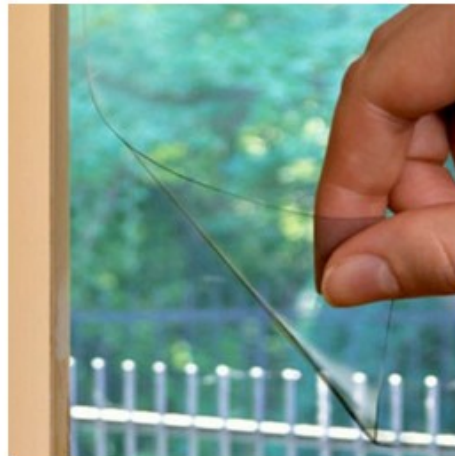
Πλέγμα ηλεκτρομαγνητικής
θωράκισης



Μπογιά ηλεκτρομαγνητικής θωράκισης



Μεμβράνη ηλεκτρομαγνητικής
θωράκισης τζαμιών



ΗΜ ΠΡΟΣΤΑΣΙΑ (Κλωβός Faraday)



HEADBAND



SCARF



MASK



CAP

