

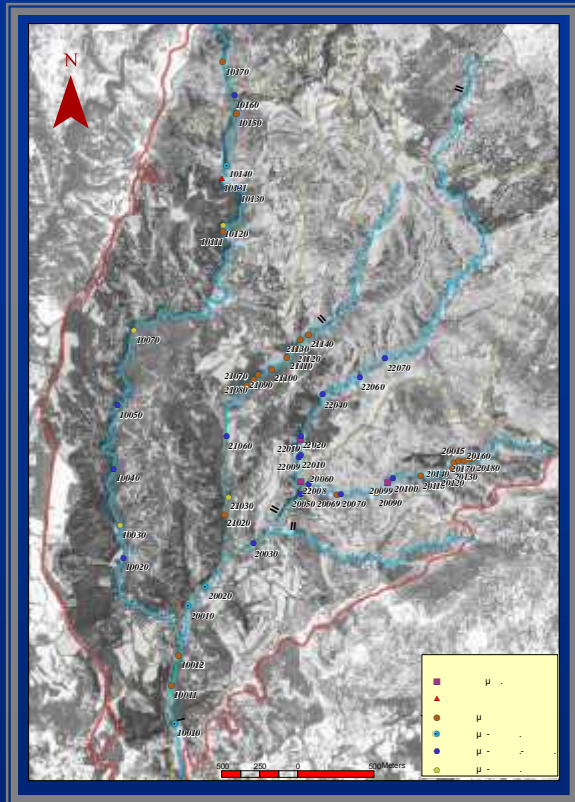


μ μ

&

&

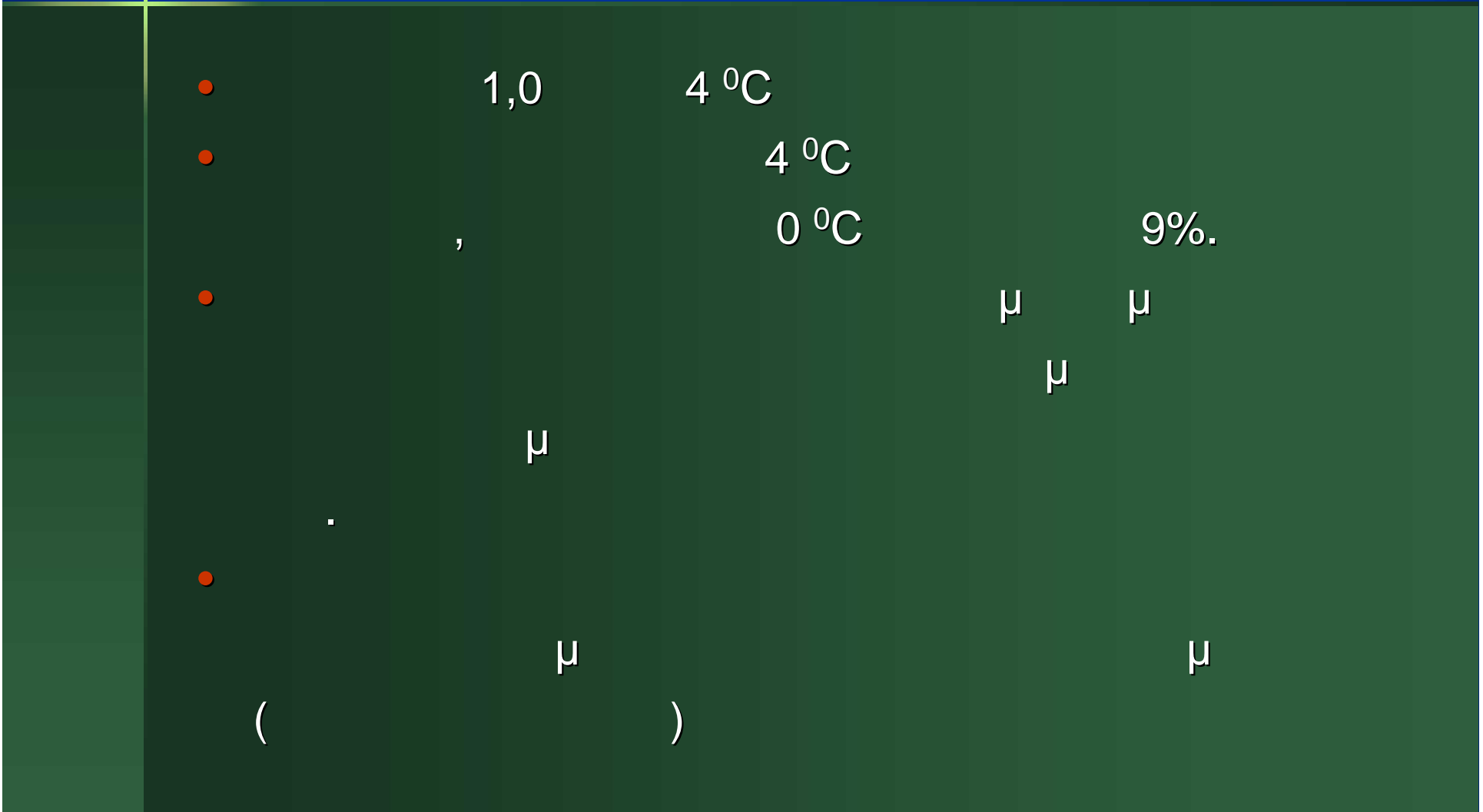
μμ



μ 17 %
 (μ) μ 2,60 %
 μ .

	μ (%)
	77,23
(800 m)	9,86
(> 800 m)	12,35
	0,17
μ	0,35
μ	0,003
μ	0,001
, ,	0,003
μ	0,04

(μ Baumgartner Reichel, 1975)



1,0

4 °C

4 °C

0 °C

9%.

μ

μ

μ

μ

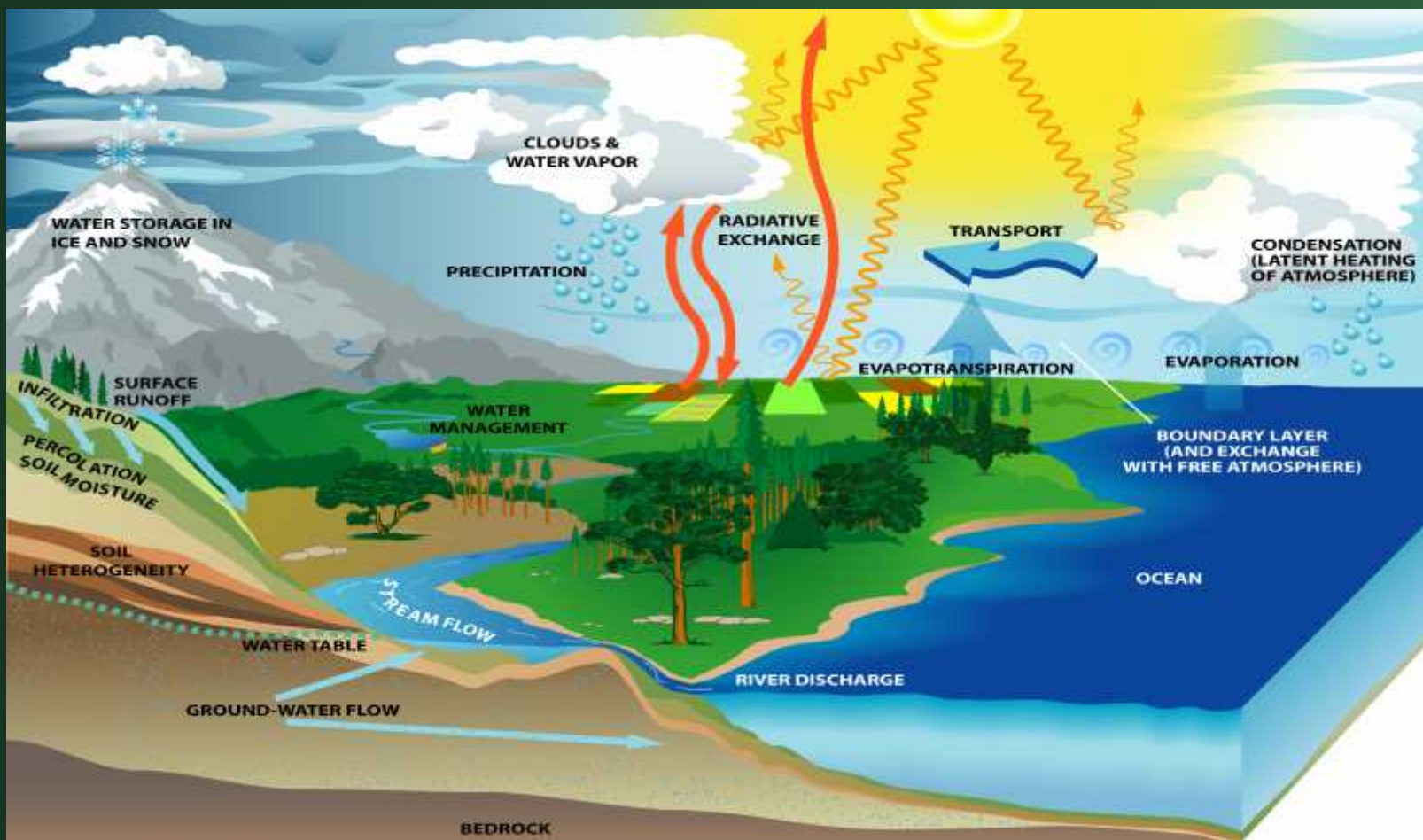
.

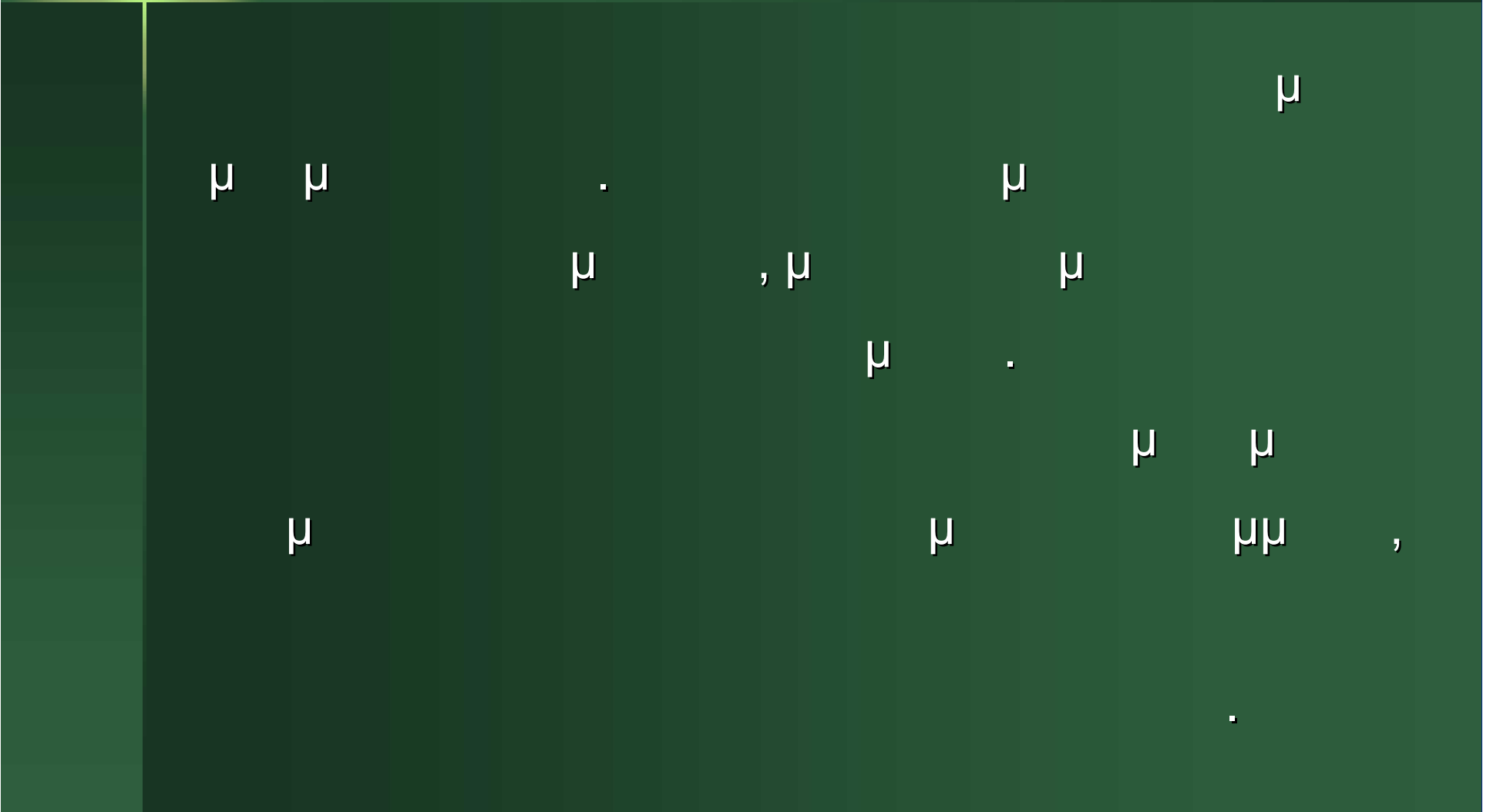
μ

μ

(

)





μ

μ

.

μ

μ

μ

, μ

μ

μ

.

μ

μ

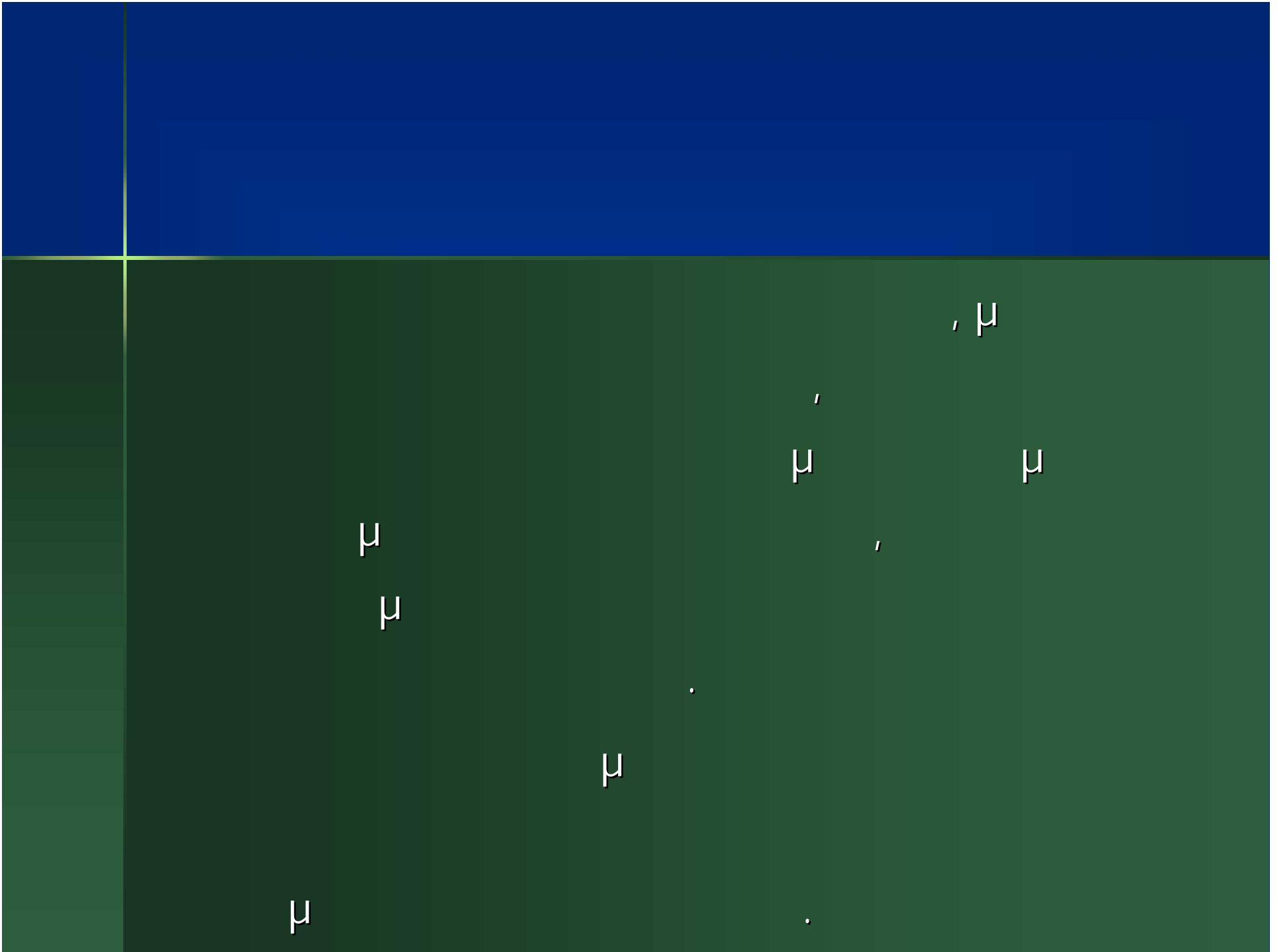
μ

μ

μμ

,

.





μ

μ

μ

μ

:



,

μ

μ

μμ

,



μ

(

)

,

“

”

.

μ

μ

μ

μ

μ

μ

μ

μ

,

μ

μ

.

H

μ

μ

✓

4000 . .

✓

μ

2.300 . .

μμ

μ

.

✓

2.800 . .

μ

μ Sadd – el – Kafara.

✓

μ

μ

μ

12 m.

✓

μ

Homs

μ

750 . . ,

μ

μ

Atrush

Khorst

700 . .

- ✓ μ . μ μ 200 . . – 700
 μ . μ 130 Km²
 1.700 μ μ 1,5 – 2 m μ 30 –
 50 m.
- ✓ μ μ μ
- ✓ 161 μ . μ Arbonne .
- ✓ μ μ

✓ 15 μ 1537

μ

μ Pontalto
Trient.

✓ 1550 μ

Brixen

.

✓ 1650 μ

μ Gaubisbach

✓ 18 μ

μ

.

✓ 1788 ()

μ μ μ μ .

✓ , μ , μ μ 1683, 1789,

μ μ .

✓ 19 μ (μ).

✓

μ

μμ

μ

1826

Duile μ

μ

.

✓

Surell

μ

μ

.

μ

μμ

.

✓

μ

μ

μμ

1856

.

μ

μ

μ

1868

1882,

.



1930

. . .

Soil Erosion Service

Soil Conservation Service



Engler

μ

μ

μ

μ

μ

Horton

. . .

μ

✓

μ

1900

μ

,

.

✓

μ

μ

μ

μ

1931

μ

μ

μ

.

✓

μ

(

,

,

μ

. .).

✓

1925

1928

μ

μ

μ

.

μ

μ

μ

✓

1936

μ

μ

.

✓

1942

μ

,

μ

.



μ

μ

1959

μ

μ

μ



1966 μ

μ

μ

μ

μ

μ

.

.

✓

1938 – 1976

:

- ✓ 866.640 m³ μ μ ,
- ✓ 390.237 m³ μ ,
- ✓ 101.349 m³ μ ,
- ✓ 48.114 m³ ,
- ✓ 6.403 m³ ,
- ✓ 346.518 m μμ ,
- ✓ 192.990 m ,
- ✓ 118.711 m μ ,
- ✓ 780 km ,
- ✓ 724,161 m ,
- ✓ 179.044.358
- ✓ μ 133.217 μμ .



μ

,

.

.

.

.

,

.

.

,

μ

,

.

μ

✓

μ

1888 μ

μ

μ

μ

. .

,

,

1894

. . . ,

μμ

μ

"

μ

".

✓

1917

1927

μ

. . .

✓

1928

μ

μ μ

μ

μ

. . .

μ μ

1930

1968

.

.



1973

. . .

,



1983

μ

μ

μ

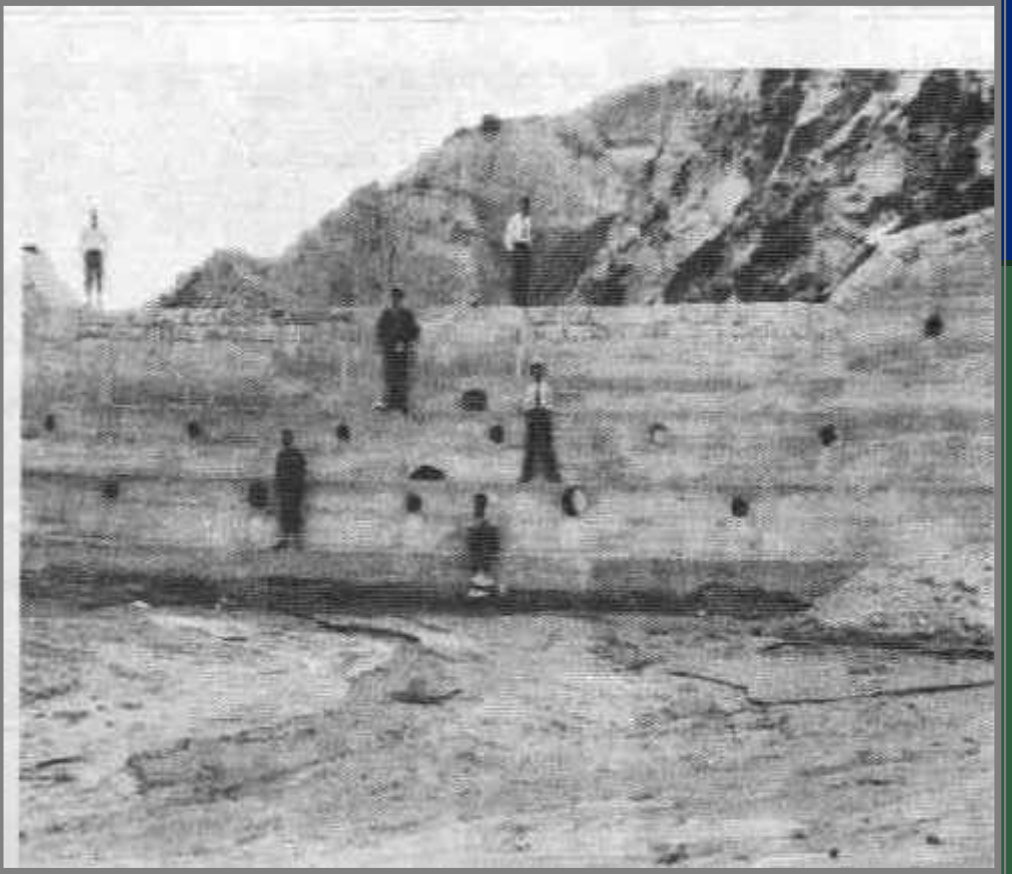
μ

$\mu \mu$

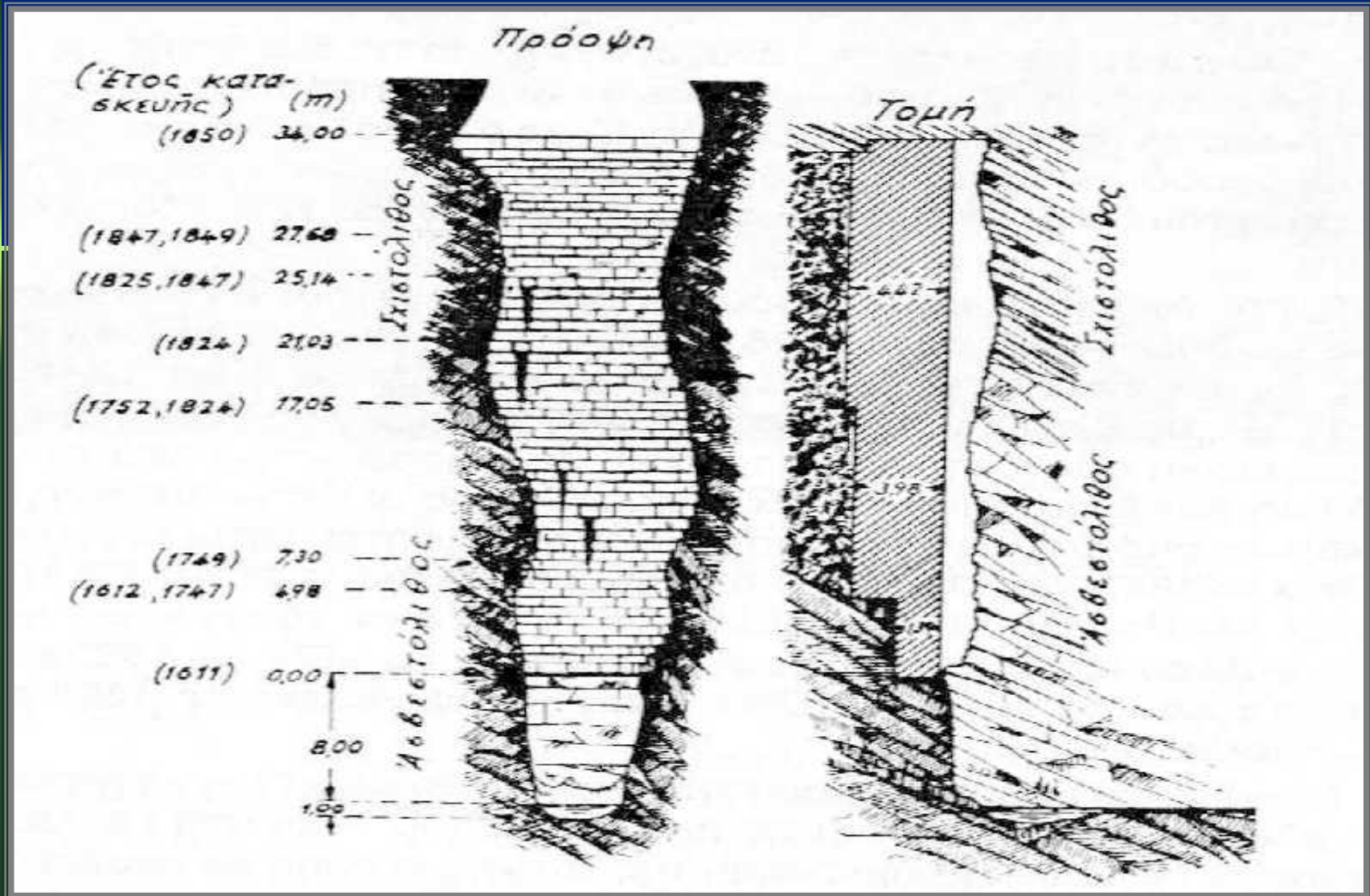
μ

.



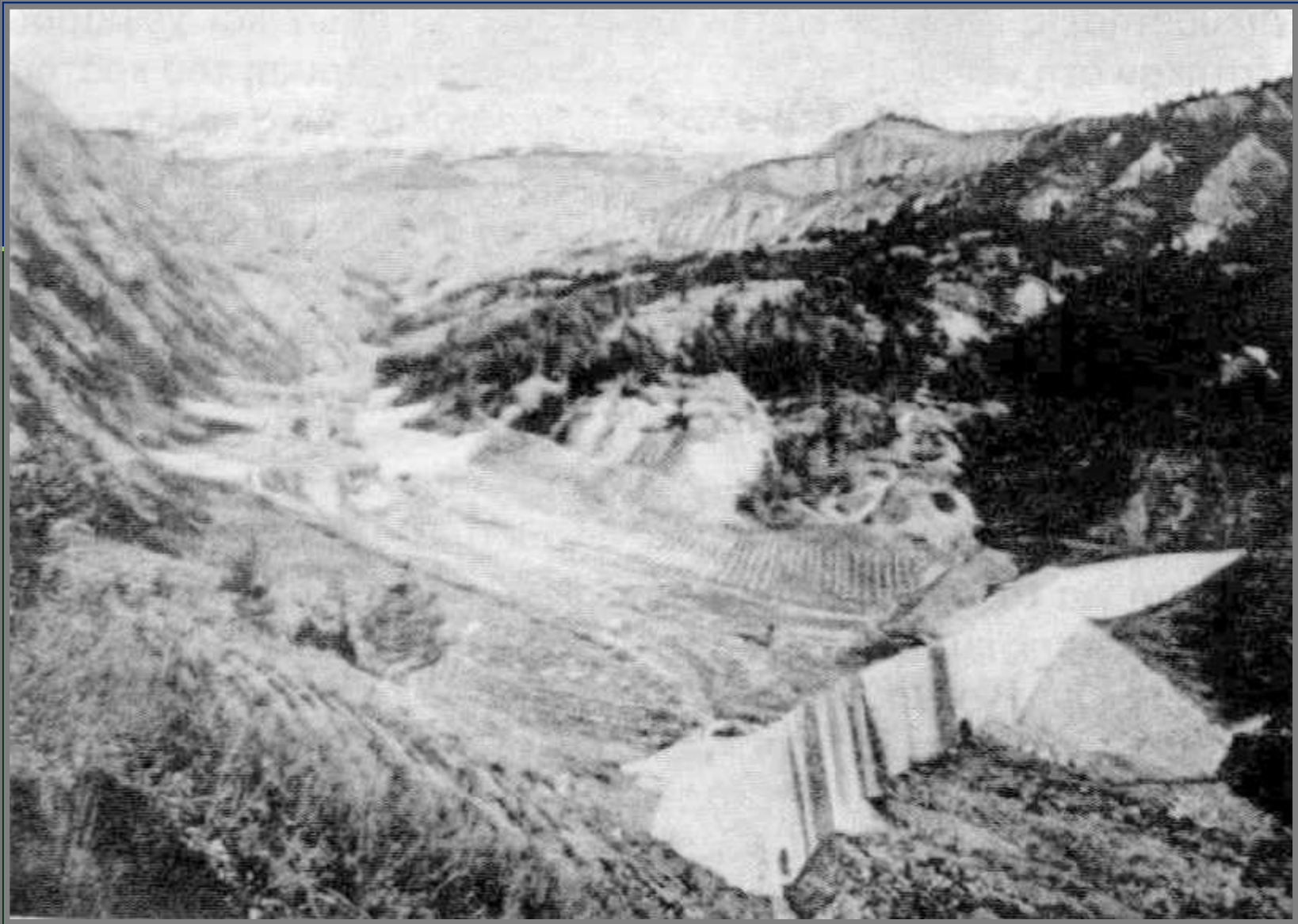


μ
μ μ
μ
(Monks) μ

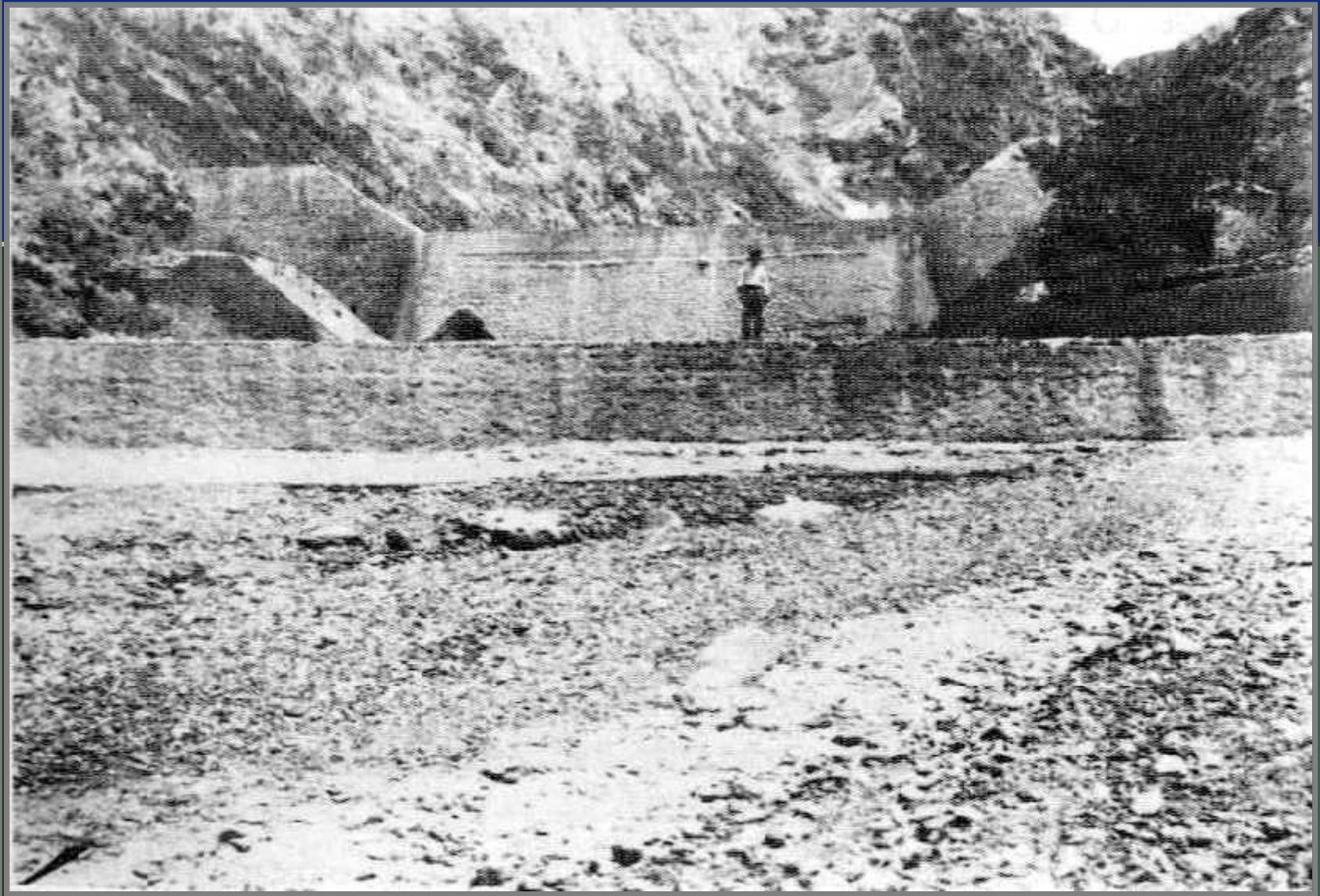


μ Pontalto μ Fersina
1537.

(Kreuter, 1921)



μ Riou Bourdoux () μ
1881
μ



μ μ (μ , 1929) μ



μμ (μ μ)

μ

μ

μ





μ

μ