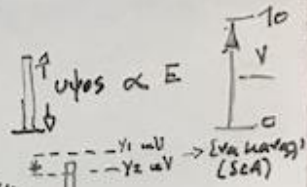
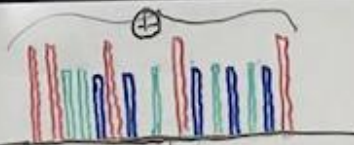
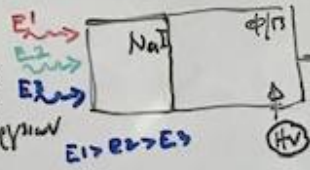


ΑΓΝΩΣΤΗ

ΠΗΓΗ

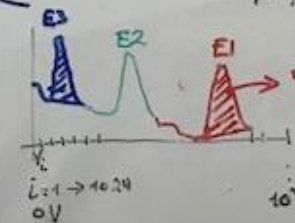
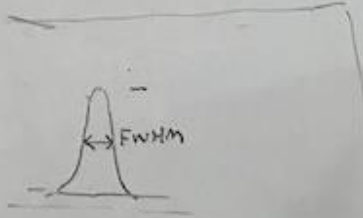
με \oplus

γ γ ακτίνων



ΠΡΟΣΔΙΟΡΙΣΜΟΣ
E1, E2, E3

↓
160705α λογισμ



εμβαδόν = αριθμ. λαβών
από φωτογία συρτάρας Ε1
↓
αριθμ. συρτάρας Ε1
↓
log λογισμ





Gamma - NAI*

File MCA Calibrate Display Analyze Edit Options Datasource Help

Busy Channel: 195 : 662.6 keV Counts: 78 Preset: 1000/51.41

Acquire

Start Stop

Expand On

Clear

ROI Index:

- +

Datasource

Prev Next

VFS = 512

NUCLIDE INFO

Next

Prev

FWHM: Area:

Nuclide: ^{137}Cs Half-life: 30.17y

Energy: 661.7 keV Yield: 85.12%

Activity:

Adjust

Stab. HVPS Gain Filter

Next

Prev

Coarse gain: x20

Fine gain: 1.4001x

S-fine gain: 0.999998x

PUR Guard: 1.10x

0.900 1.900 0.9975 1.0025 1.1 2.5

Exit

Help

For Help, press F1 Execution Status: ready

16:12 08-Apr-21

Gamma - NAI*

File MCA Calibrate Display Analyze Edit Options Datasource Help

Busy Channel: 195 : 662.6 keV Counts: 262 Preset: 1000/141.87

Acquire Start Stop

Expand On Clear

ROI Index: - +

Datasource Prev Next

NUCLIDE INFO Next Prev

FWHM: Nuclide: CS-137 Energy: 661.7 keV Activity:

Digital Oscilloscope

Vertical Scale 2.000 volts/div 0.005

Vertical Offset

Smoothing Factor 4 1 32

Horizontal Scale 10.0 0.5 microseconds/div 100

Horizontal Delay 8.0 0 32 microseconds

Display Options Zoom On Grid Lines

Trigger Select Fast Discriminator Inhibit

Defaults Exit Help

Adjust Stab. HVPS Gain Filter

Pole Zero Assistant 3300

Exit Help

For Help, press F1 Execution Status: ready

16:14 08-Apr-21

The screenshot displays the Gamma - NAI software interface. At the top, the title bar reads "Gamma - NAI*" and the menu bar includes "File", "MCA", "Calibrate", "Display", "Analyze", "Edit", "Options", "Datasource", and "Help". The main status bar shows "Busy", "Channel: 195 : 662.6 keV", "Counts: 262", and "Preset: 1000/141.87". On the left, there is an "Acquire" section with "Start" and "Stop" buttons, followed by "Expand On" and "Clear" buttons. Below that are "ROI Index" controls with "-" and "+" buttons, and "Datasource" controls with "Prev" and "Next" buttons. The "NUCLIDE INFO" section has "Next" and "Prev" buttons and displays "FWHM:", "Nuclide: CS-137", "Energy: 661.7 keV", and "Activity:". The central area is dominated by a "Digital Oscilloscope" window. It features a grid with a red waveform. The "Vertical Scale" is set to 2.000 volts/div and 0.005. The "Horizontal Scale" is 10.0 microseconds/div. The "Horizontal Delay" is 8.0 microseconds. The "Smoothing Factor" is 4. The "Display Options" section has "Zoom On" unchecked and "Grid Lines" checked. The "Trigger Select" section has "Fast Discriminator" selected. The "Adjust" window is open at the bottom, showing "Stab.", "HVPS", "Gain", and "Filter" tabs, with "Filter" selected. It contains a "Pole Zero Assistant" section with a value of 3300 and "Exit" and "Help" buttons. The Windows taskbar at the bottom shows the system tray with "EN", volume, and network icons, and the date/time "16:14 08-Apr-21".

Gamma - NAI*

File MCA Calibrate Display Analyze Edit Options Datasource Help

Busy Channel: 195 : 661.8 keV Counts: 5399 Preset: 1000/362.78

Acquire

Start Stop

Expand On

Clear

ROI Index:

- +

Datasource

Prev Next

MARKER INFO

Next

Prev

Left Marker: 170 : 573.3 keV	FWHM, FWTM: 51.736, 96.427 keV
Right Marker: 223 : 760.9 keV	Gaussian Ratio: 1.022
Centroid: 195 : 660.4 keV	ROI Type:
Area: 82330 ± 0.40%	Integral: 91442

Adjust

Stab. HVPS Gain Filter

Next

Prev

Coarse gain: x10

Fine gain: 1.4001x

S-fine gain: 0.999998x

PUR Guard: 1.10x

Exit

Help

0.900 1.900 0.9975 1.0025 1.1 2.5

For Help, press F1 Windows Media Player Execution Status: ready

16:06 08-Apr-21

